

大宅門寫意 - 蘆溝曉月

低音笙

趙季平

慢板 $\text{♩} = 56$

5

12

mf *p* *mf*

mp

20

26

6 19

$\text{♩} = 48$ $\text{♩} = 63$

行板

f *p*

55

61

cresc.

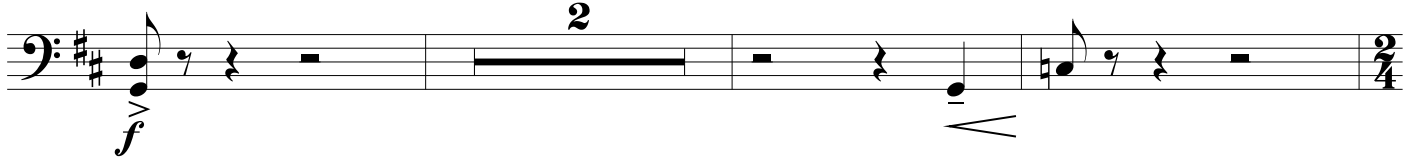
67

mp

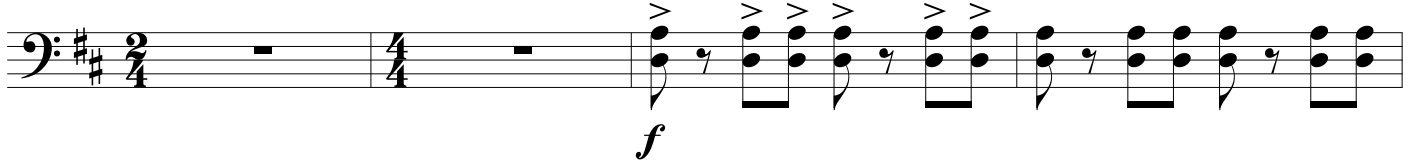
73

f

79 快板 ♩ = 144



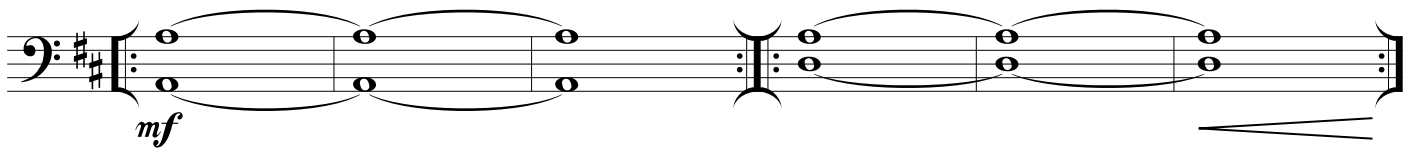
84



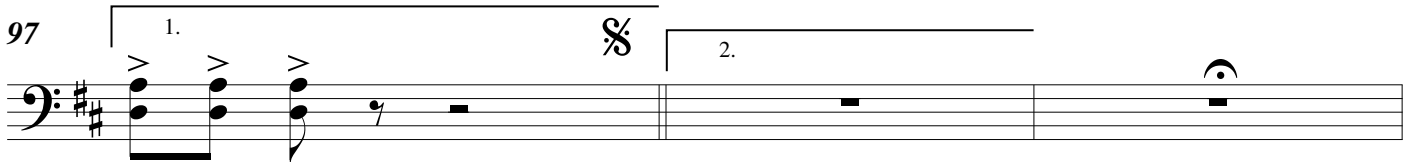
88



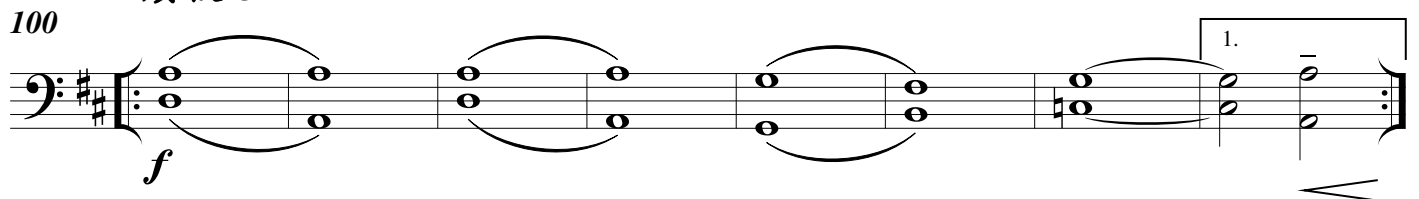
91



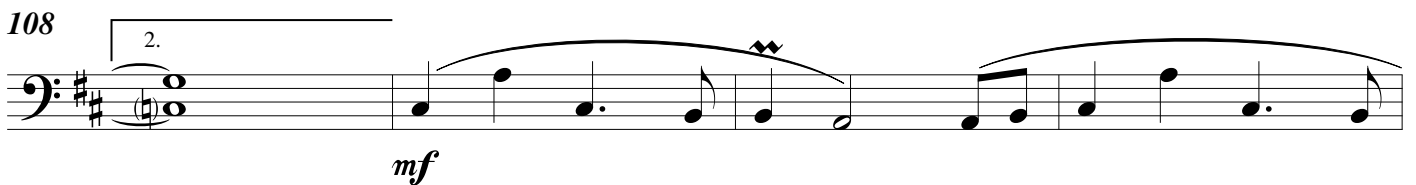
97



廣板 ♩ = 48



108



112

