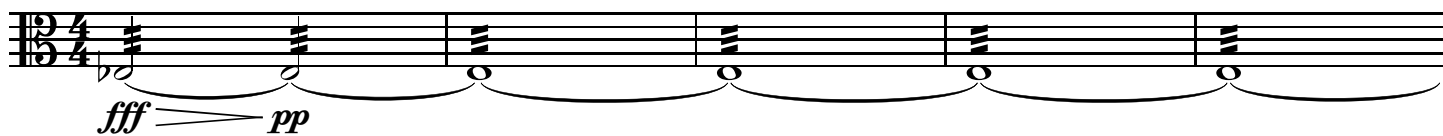


中阮

賽馬會中樂360
唐響
(中級)

伍卓賢 曲、編

夢 ♩ = 62 ca. 稍自由



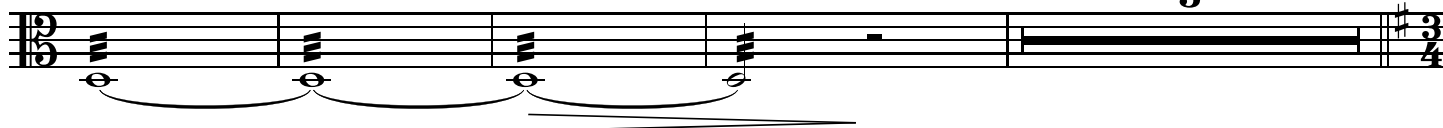
6



12



18



25 ♩ = 56 ca.

Musical notation for measure 25, starting with *mp* dynamic. The notation is on a single staff with a treble clef and a key signature of one sharp (F#). The time signature changes from 3/4 to 4/4, then back to 3/4, and finally to 4/4. The melody consists of eighth and quarter notes.

Musical notation for measure 29, continuing the melody from measure 25. The time signature changes from 3/4 to 4/4, then back to 3/4, and finally to 4/4.

Musical notation for measure 33, continuing the melody from measure 29. The time signature changes from 3/4 to 4/4, then back to 3/4, and finally to 4/4.

Musical notation for measure 37, continuing the melody from measure 33. The time signature changes from 3/4 to 4/4, then back to 3/4, and finally to 4/4.

Musical notation for measure 41, starting with *mf* dynamic. The notation includes a whole rest in the first two measures, followed by a melody in the remaining measures. The time signature changes from 3/4 to 4/4, then back to 3/4, and finally to 4/4.

Musical notation for measure 45, continuing the melody from measure 41. The time signature changes from 3/4 to 4/4, then back to 3/4, and finally to 4/4.

Musical notation for measure 49, starting with *f* dynamic. The notation includes a crescendo hairpin leading to a series of eighth notes. The time signature changes from 3/4 to 4/4, then back to 3/4, and finally to 4/4.

Musical notation for measure 52, starting with *mf* dynamic. The notation includes a series of eighth notes with a crescendo hairpin. The time signature changes from 3/4 to 4/4, then back to 3/4, and finally to 4/4.

Musical notation for measure 54, starting with *f* dynamic. The notation includes a series of eighth notes with a crescendo hairpin. The time signature changes from 3/4 to 4/4, then back to 3/4, and finally to 4/4.

Musical notation for measure 56, starting with *mp* and *p* dynamics. The notation includes a series of eighth notes with a crescendo hairpin, followed by a series of eighth notes with a decrescendo hairpin. The time signature changes from 3/4 to 4/4, then back to 3/4, and finally to 4/4.

59

62

65

68

71

78

81

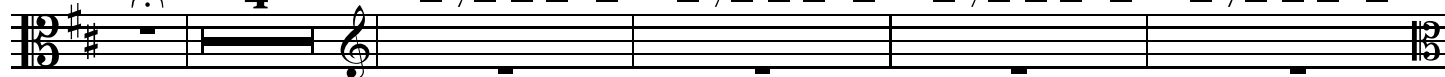
84

87

90

94 盛 $\text{♩} = 78 \text{ ca.}$
4

(柳琴)



103



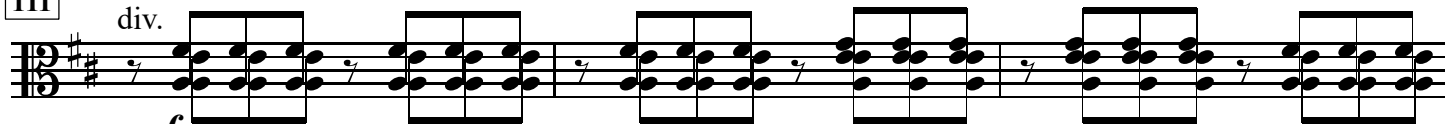
f $\text{♩} = 156 \text{ ca.}$

$< ff$

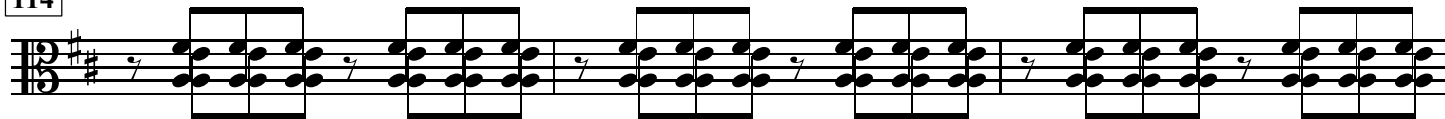
111

div.

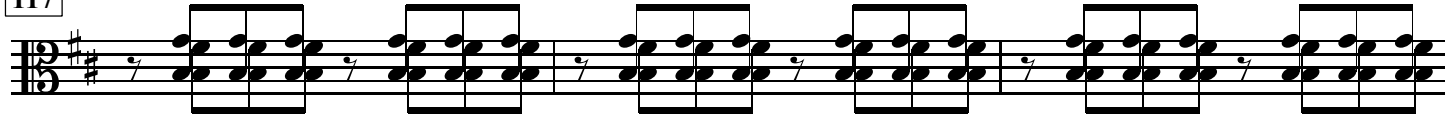
f



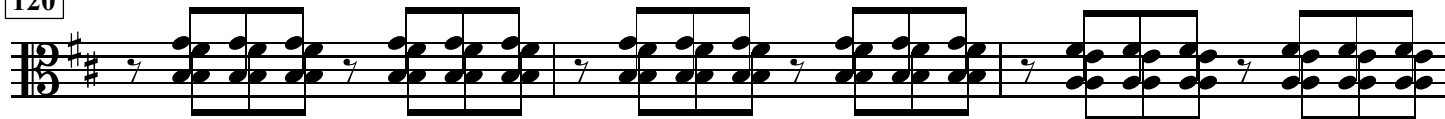
114



117

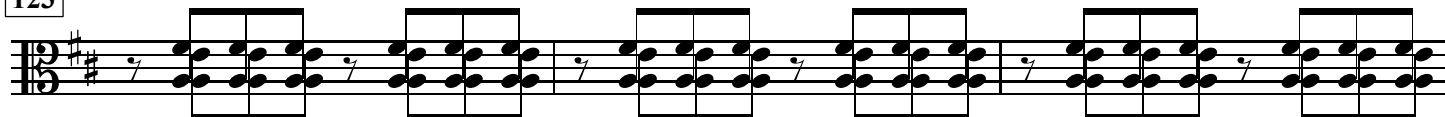


120



mf ff mp

123



126



129



132



mp

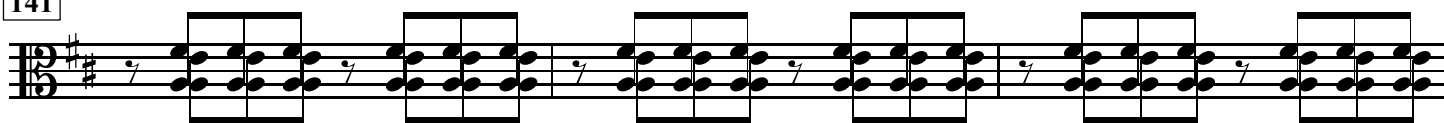
135



138



141



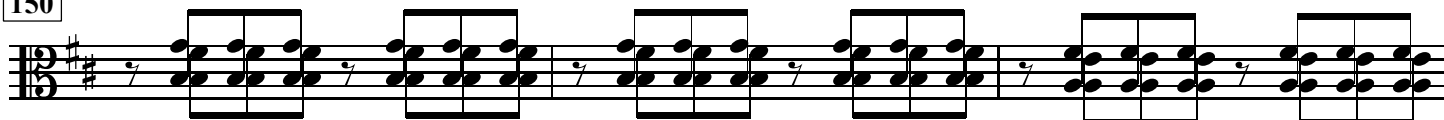
144



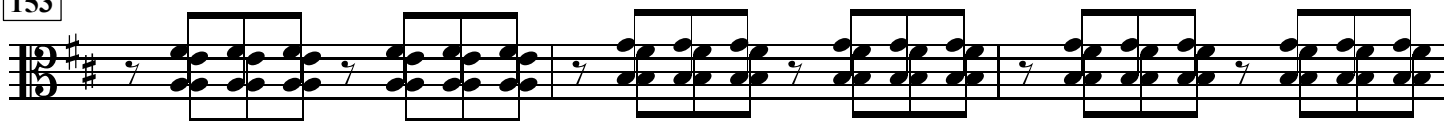
147



150



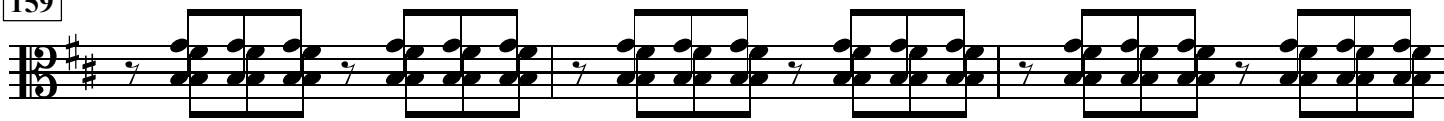
153



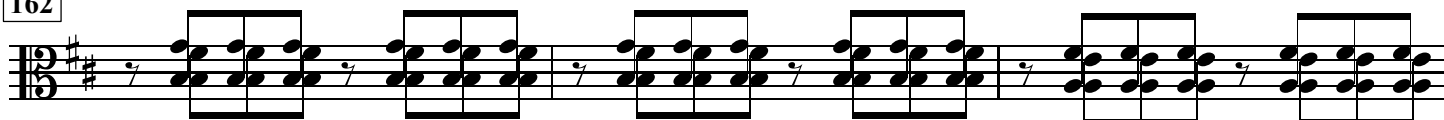
156



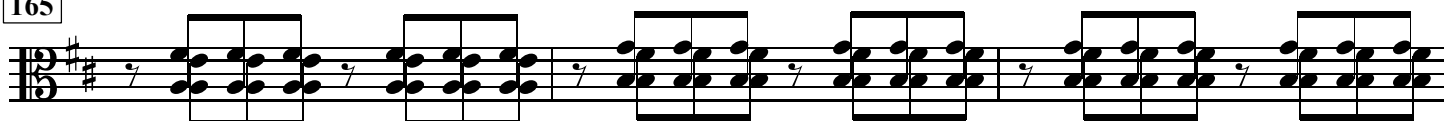
159



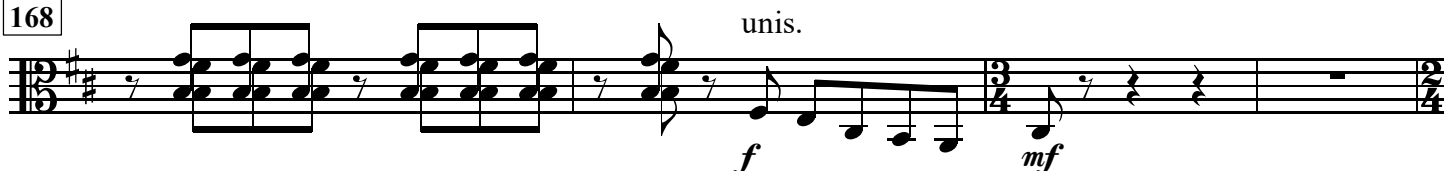
162



165



168

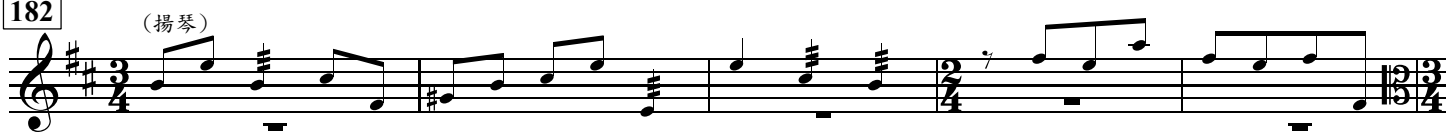


※「普及版樂譜系列」中的樂曲編訂及樂譜製作均屬於「賽馬會中樂360」的一部分。※
 ※系列中的樂譜可經由「賽馬會中樂360」網站 (cm360.hk) 下載，僅作教育及音樂推廣之用途。※

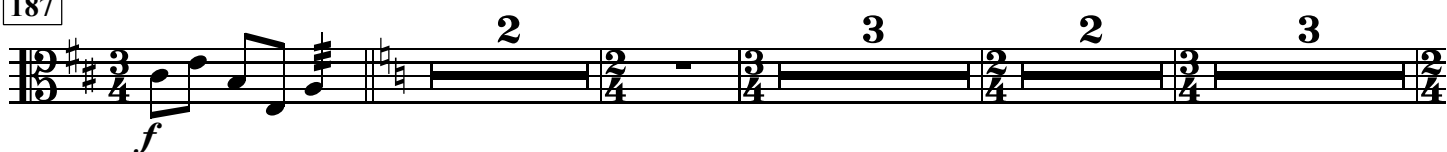
172



182



187



199



206



211



216



220



224



228



232



236



240



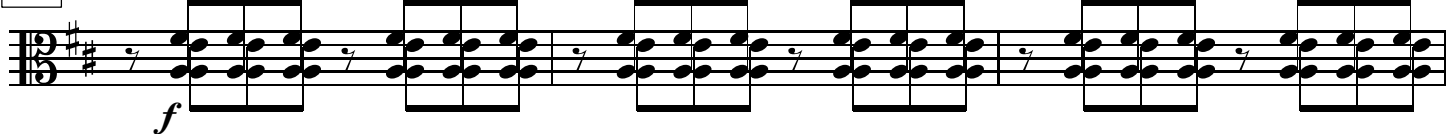
244



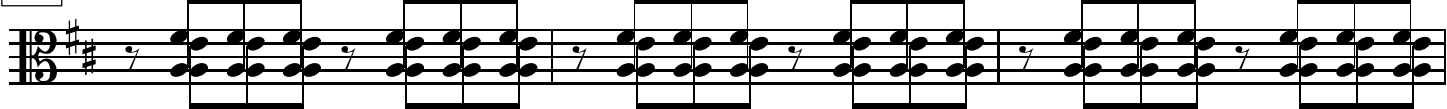
249



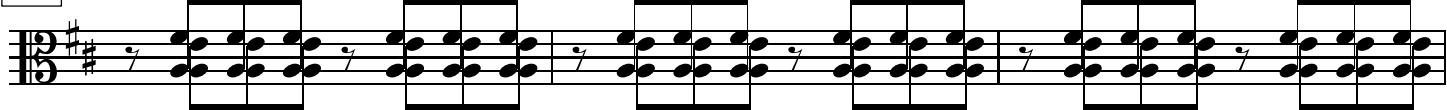
254



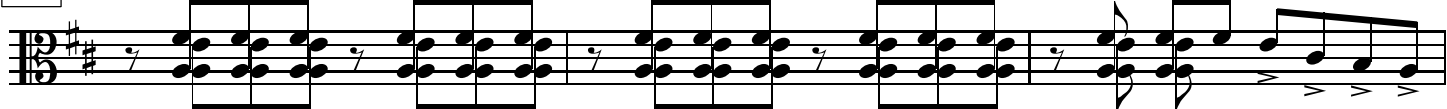
257



260



263



266



270



274



278



282



286

舞

♩ = 62 ca.

(琵琶)

291

295

302

307

311

315

319

323

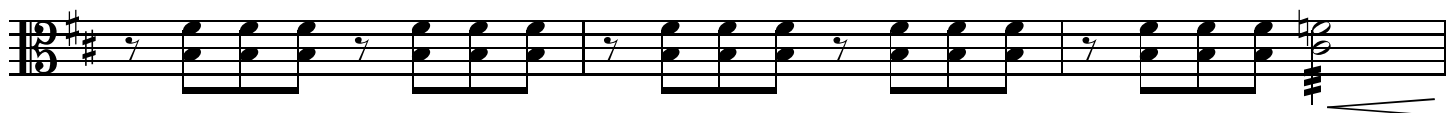
327



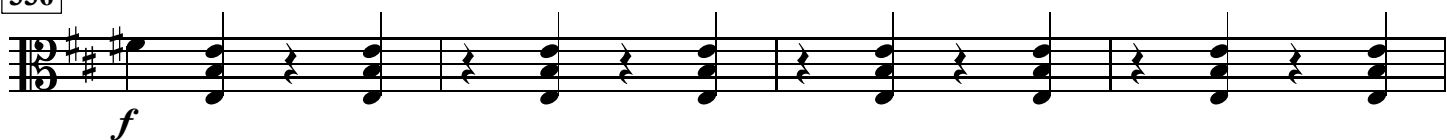
330



333



336



340



344



346

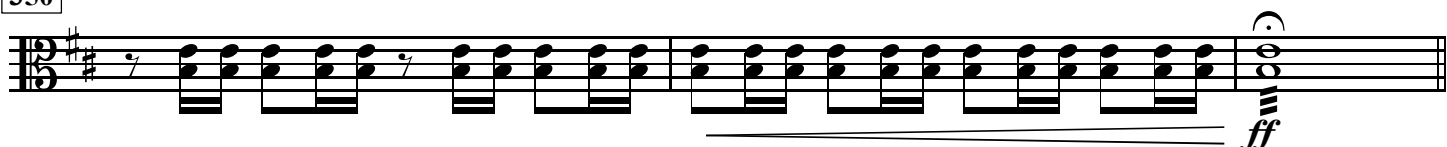


348

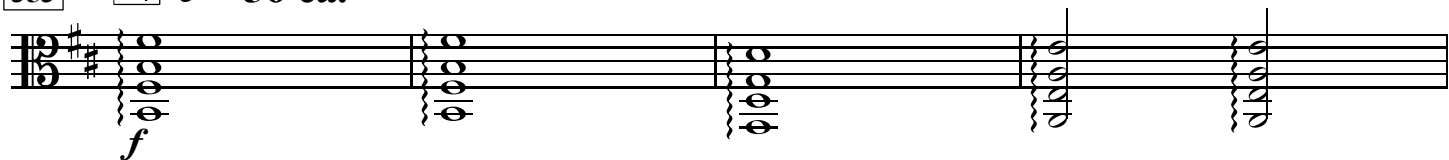


稍加快

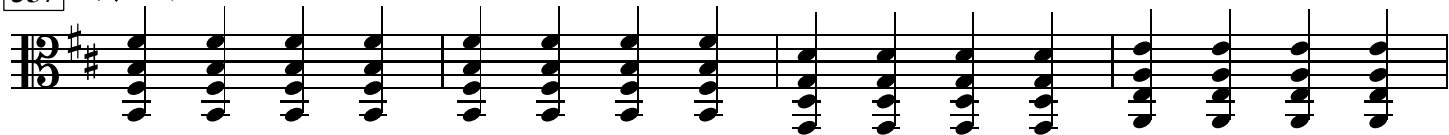
350



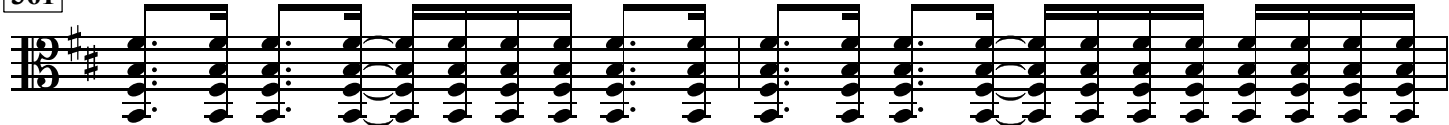
353 同 ♩ = 56 ca.



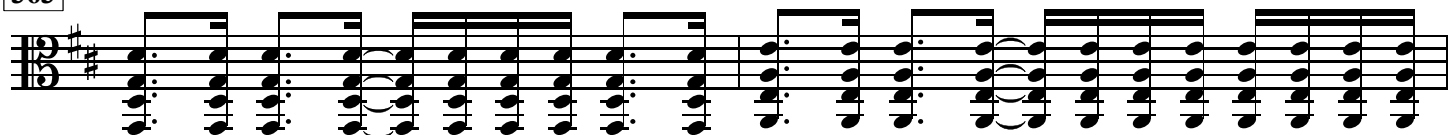
357 稍加快



361 ♩ = 66 ca.



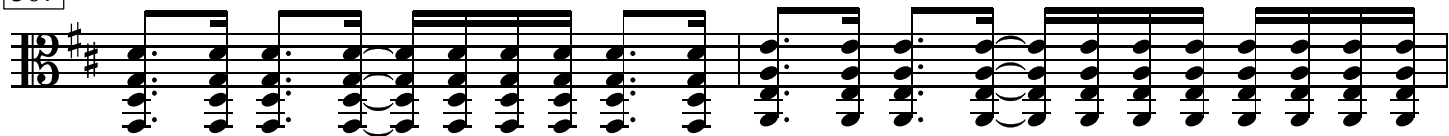
363



365 ♩ = 69 ca.



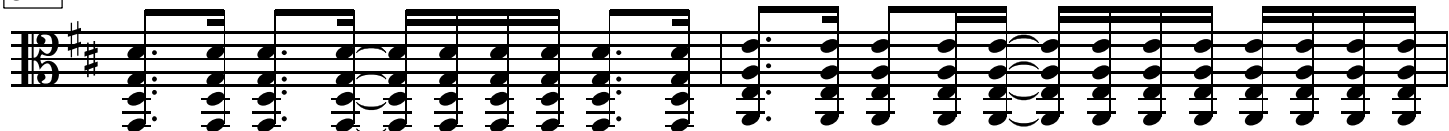
367



369



371



373

[唱]

啊 啊

377

381

f

383

385

387

稍慢

389

ff *fff*